

2013

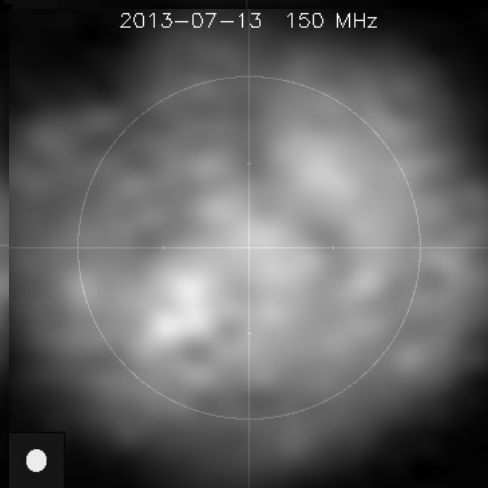
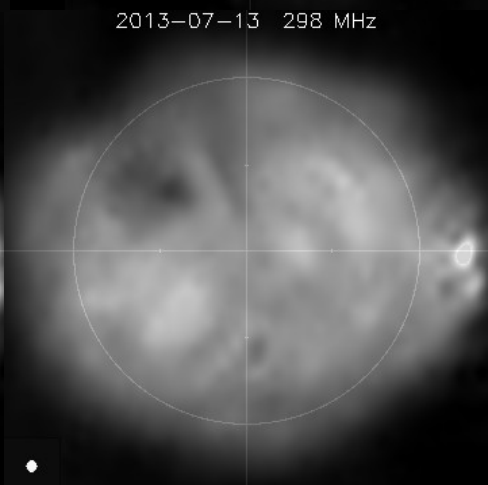
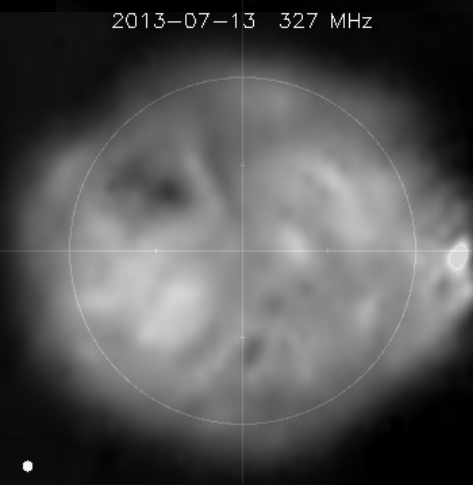
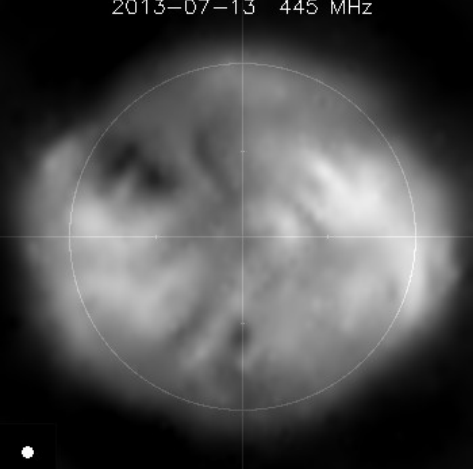
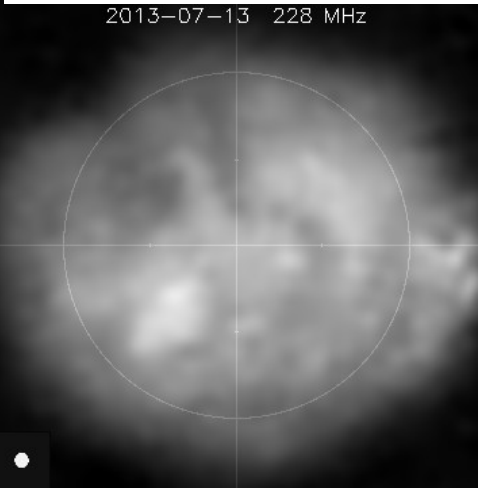
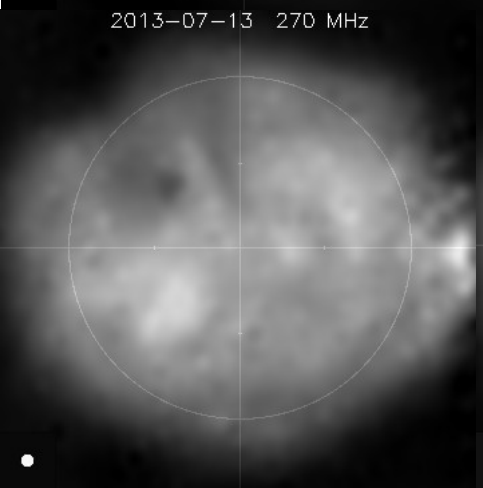
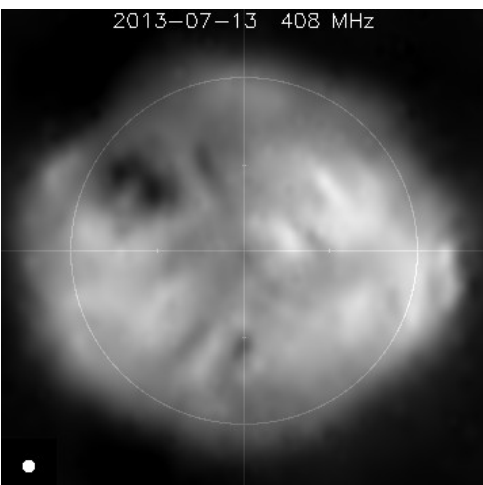
Juillet 13, 14

13 jul 2013 (revu 22 jan 2015)

445 432 (recalibré, $\frac{1}{2}$ pour 445 432 408)

408 327 299

271 228 173 151 MHz.



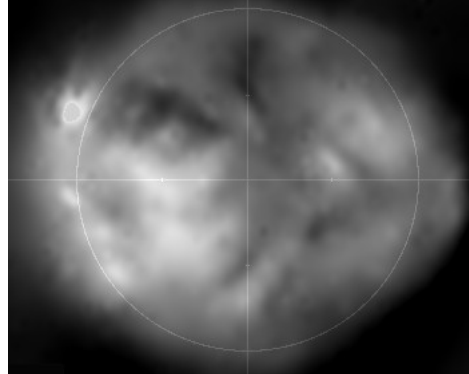
14 jul 2013 (*fait 16 jul 2013*)

445 432 *aucune recalibration*

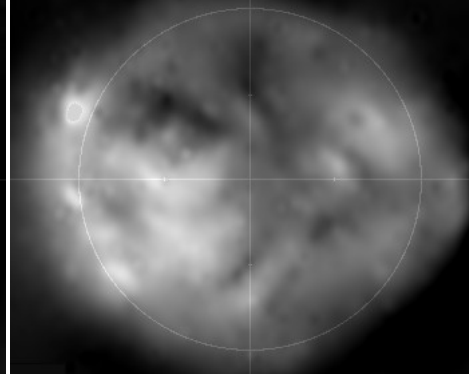
408 327 299

271 228 173 151 *MHz.*

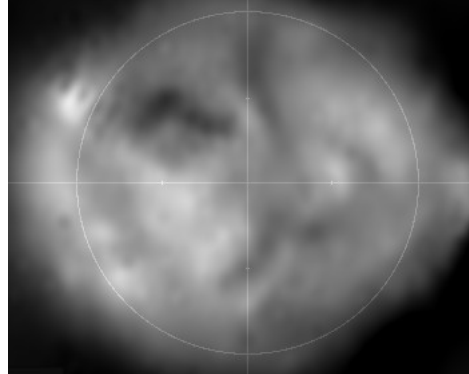
2013-07-14 445 MHz



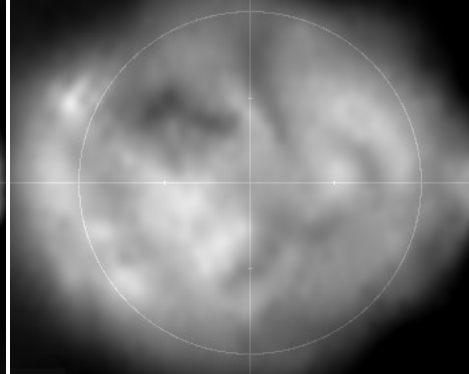
2013-07-14 432 MHz



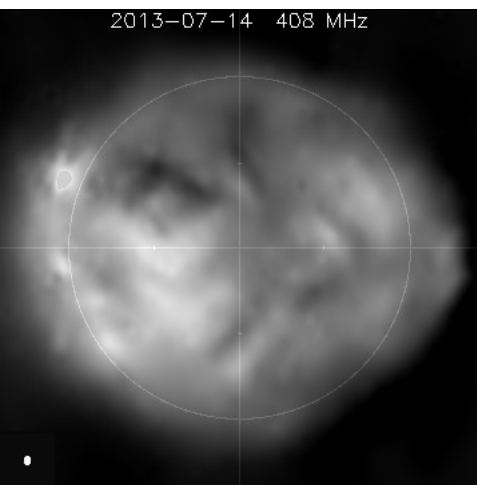
2013-07-14 327 MHz



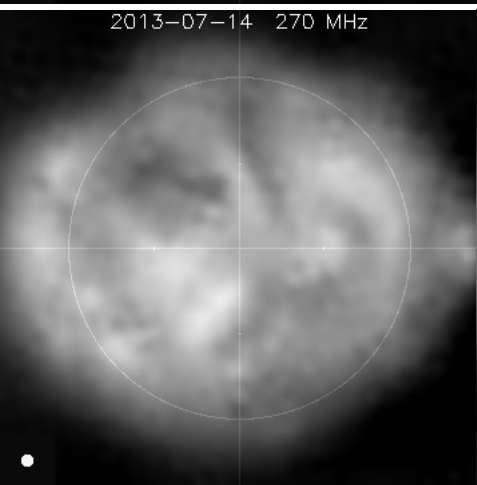
2013-07-14 298 MHz



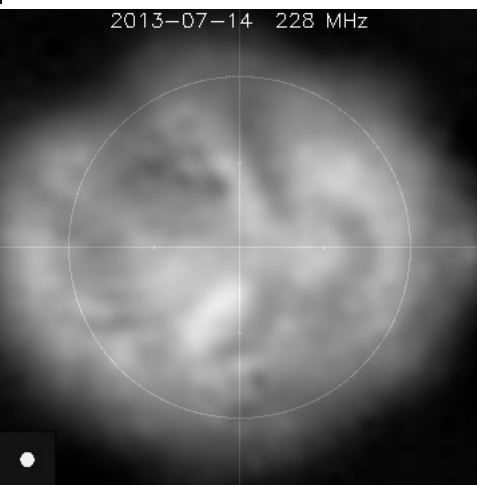
2013-07-14 408 MHz



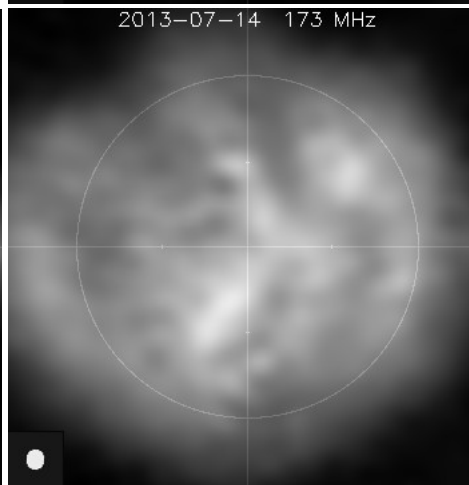
2013-07-14 270 MHz



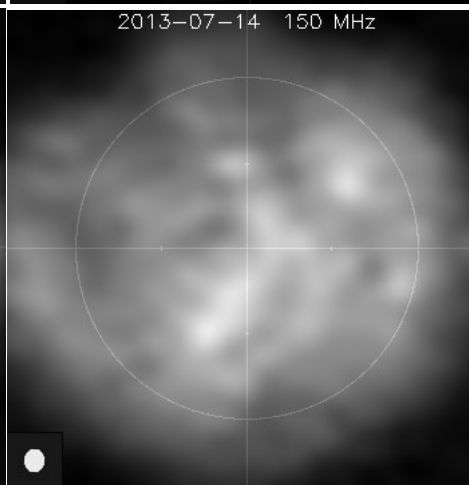
2013-07-14 228 MHz



2013-07-14 173 MHz



2013-07-14 150 MHz



14 jul 2013 (*fait 19 jul 2013*)

445 432 *recalibré*

408 327 299

271 228 173 151 *MHz.*

